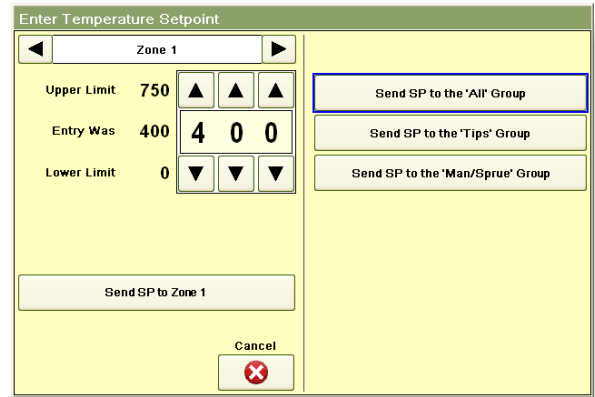
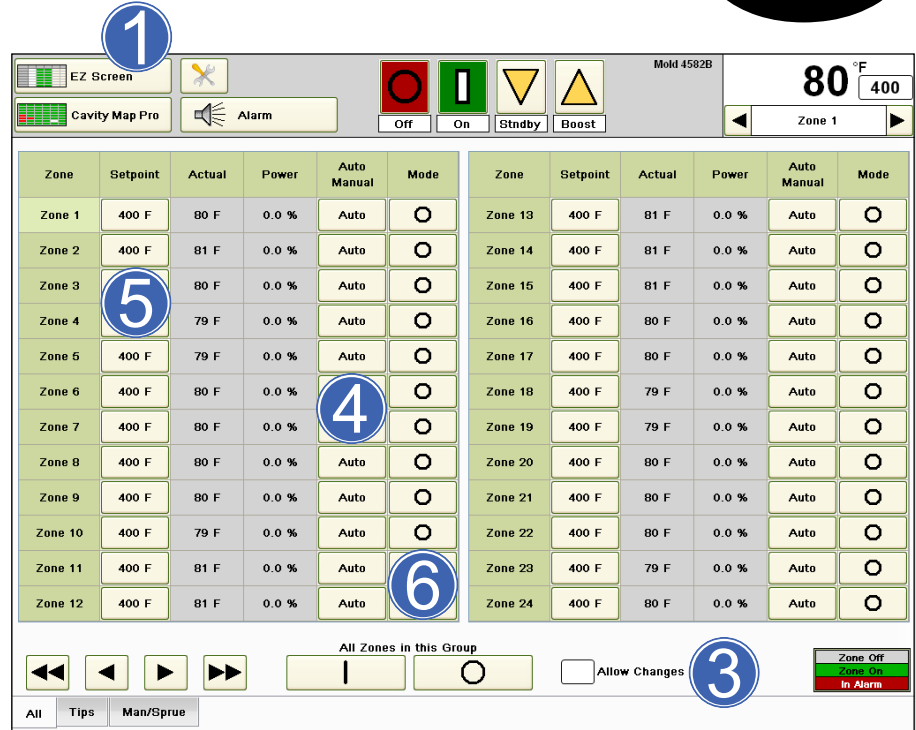
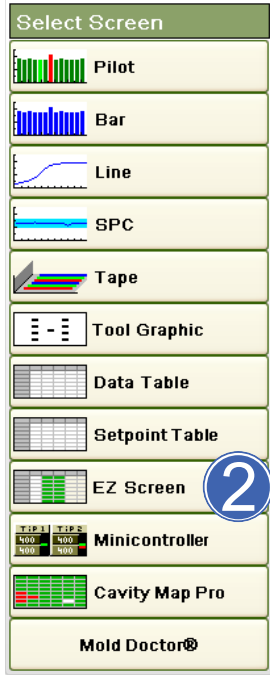
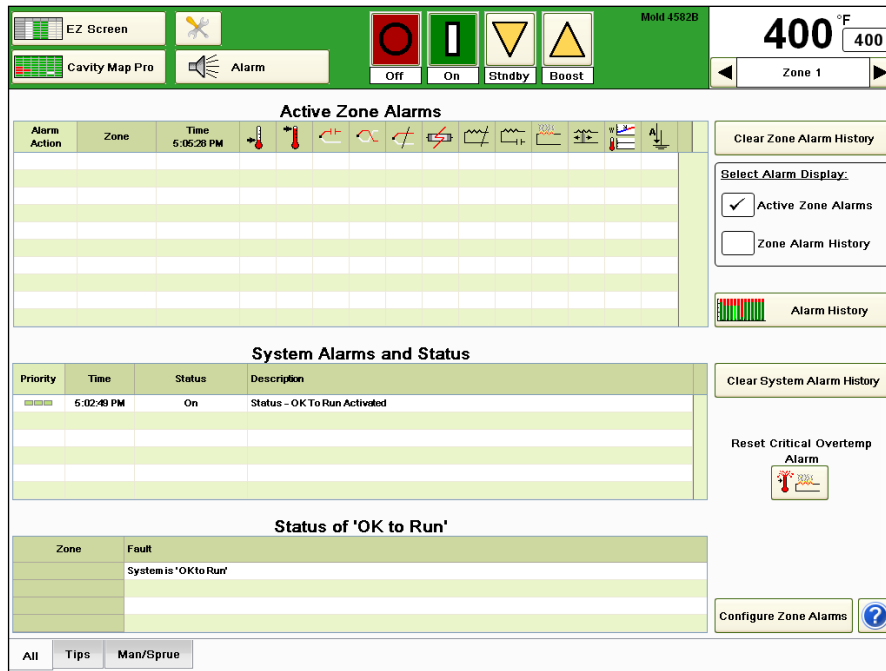


# Hizli Baflangıç Kilavuzu



- 1 "Select Screen" (Ekran seç) tuşuna basın ve tuşu basılı tutun
- 2 "EZ Screen"i (EZ ekranı) seçin
- 3 "Allow Changes"i (Değişikliklere izin ver) işaretleyin
- 4 Döndür, "Auto" (Otomatik), "Manuel" (Manüel), "Monitor" (Monitör), "Locked" (Kilitli)
- 5 "Setpoint"e (Ayar noktası) basın, bölge veya gruba uygulama
- 6 Bölge veya grupta "On" (Açık) veya "Off" (Kapalı) arasında geçiş yapın



## Alarm Tutor

**Zone Alarms:**

- Deviation Low Alarm.** The temperature of the zone is below the deviation band.
- Deviation High Alarm.** The temperature of the zone exceeds the deviation band.
- Thermocouple Open Alarm.** The T/C connection is broken.
- Thermocouple Reversed Alarm.** The T/C connection is wired + to - at some point.
- Thermocouple Short Alarm.** The T/C is pinched or the controller thinks that it is pinched. (>98% output must see 20F (11C) rise in 5 minutes)
- Resistance Monitor Alarm.** The resistance of the heater has deviated by more than 40% from the Baseline resistance
- Watt Alarm.** The output for the zone has exceeded the limits that have been entered.
- Open Fuse Alarm.** Fuse on module bad.
- Heater Short Alarm.** The heater is shorted or exceeds the maximum rating of the module.
- Heater Open Alarm.** The heater connection is broken.
- Uncontrolled Output Alarm.** The module has an unregulated output.
- Ground Fault.**

**System Alarms:**

- Critical Overtemp Alarm.** The temperature for a zone has exceeded the alarm limit.
- Material Protection Alarm.** The machine has stopped cycling and the controller has gone to Standby.
- >X<** Denotes that the alarm is active at this time.
- X** Denotes that the alarm turned on when indicated but is not active at this time.

**Done**