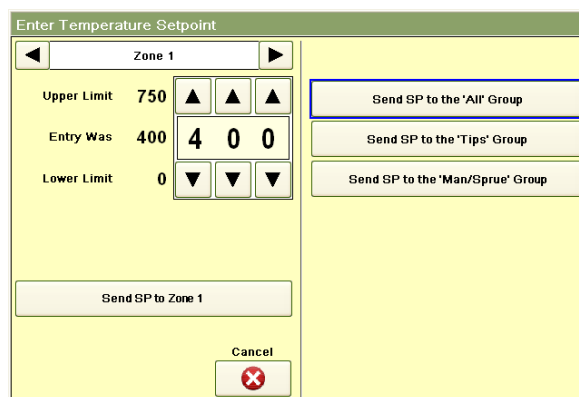
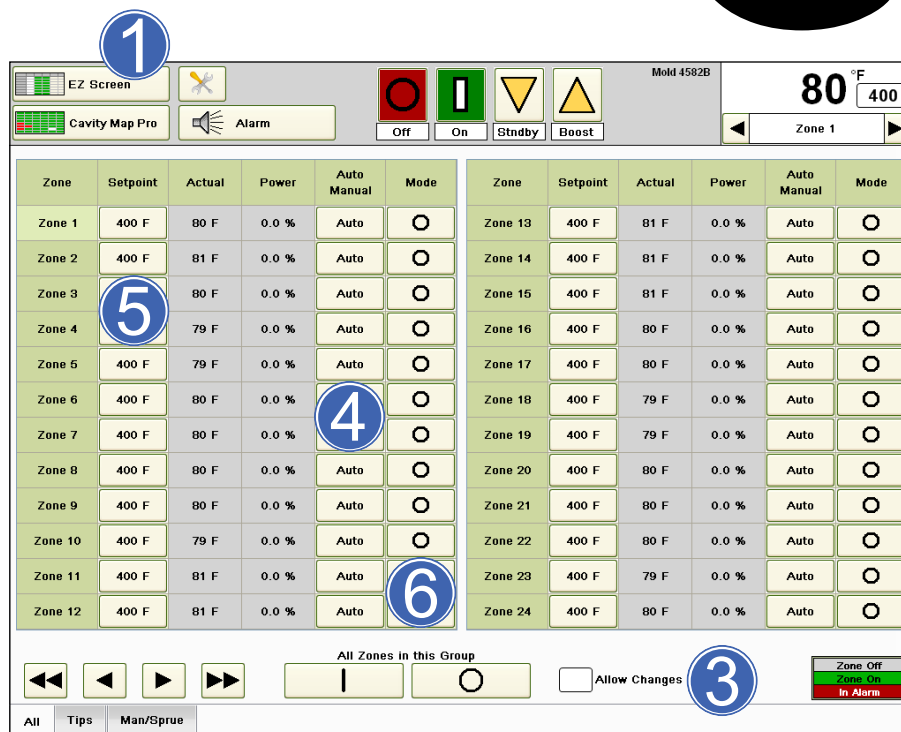
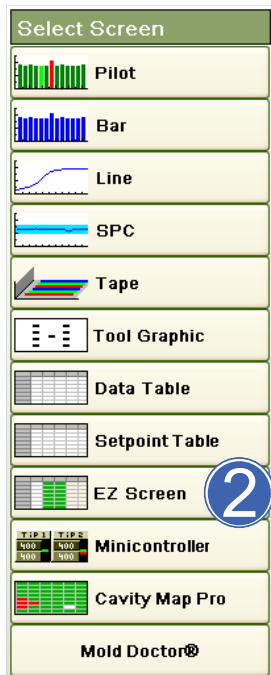
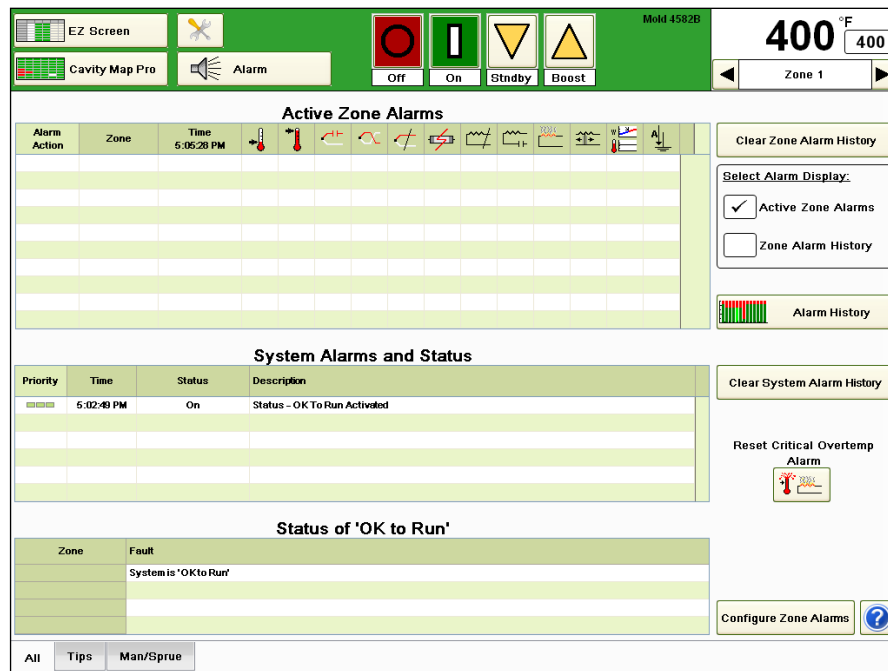


Instrukcja szybkiego uruchomienia



- 1 Nacisnąć i przytrzymać “Select Screen” (Wybierz ekran)
- 2 Wybrać “EZ Screen” (Ekran EZ)
- 3 Zaznaczyć “Allow Changes” (Dopuszczaj zmiany)
- 4 Obrócić “Auto”, “Manual” (Ręczny), “Monitor”, “Locked” (Zablokowany)
- 5 Nacisnąć “Setpoint” (Ustawienie), dostosować wg strefy lub wg grupy
- 6 Przełączyć na “On” (Włączony) lub “Off” (Wyłączony) wg strefy lub wg grupy

Instrukcja szybkiego uruchomienia



Alarm Tutor

Zone Alarms:

- Deviation Low Alarm.** The temperature of the zone is below the deviation band.
- Deviation High Alarm.** The temperature of the zone exceeds the deviation band.
- Thermocouple Open Alarm.** The T/C connection is broken.
- Thermocouple Reversed Alarm.** The T/C connection is wired + to - at some point.
- Thermocouple Short Alarm.** The T/C is pinched or the controller thinks that it is pinched. (>98% output must see 20F (11C) rise in 5 minutes)
- Resistance Monitor Alarm.** The resistance of the heater has deviated by more than 40% from the Baseline resistance
- Watt Alarm.** The output for the zone has exceeded the limits that have been entered.
- Open Fuse Alarm.** Fuse on module bad.
- Heater Short Alarm.** The heater is shorted or exceeds the maximum rating of the module.
- Heater Open Alarm.** The heater connection is broken.
- Uncontrolled Output Alarm.** The module has an unregulated output.
- Ground Fault.**

System Alarms:

- Critical Overtemp Alarm.** The temperature for a zone has exceeded the alarm limit.
- Material Protection Alarm.** The machine has stopped cycling and the controller has gone to Standby.

Legend:

- Denotes that the alarm is active at this time.
- Denotes that the alarm turned on when indicated but is not active at this time.

Done